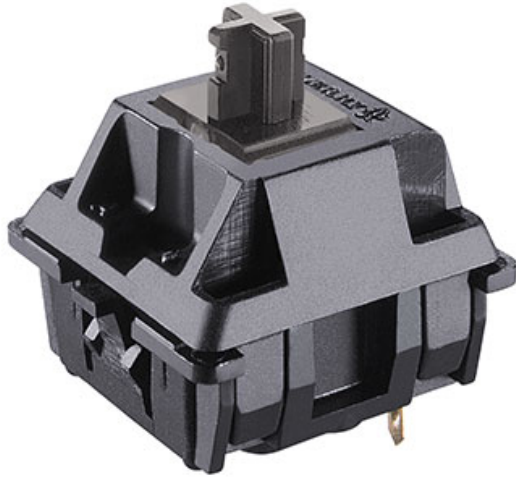


CHERRY MX SILENT BLACK



Models may vary from the image shown

Silent CHERRY MX keyswitch with patented (patent pending) noise reduction

Silent CHERRY MX keyswitch - the original with no compromises. The patented (patent pending) noise reduction reliably minimises any operating noises. This is the most silent form of quality, precision and reliability.

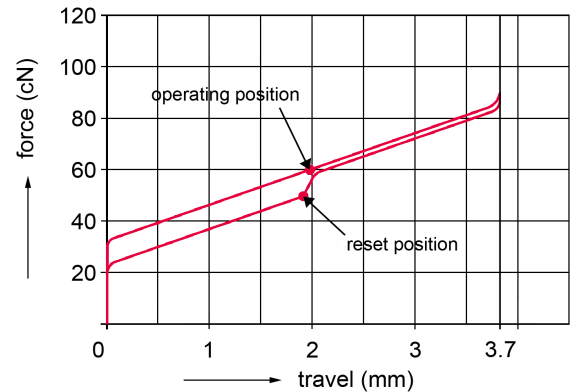
Key benefits

- Black switch: Without pressure point, linear actuation - switching function with a defined force of approx. 60 cN without contact feedback
- Noise-optimised MX keyswitch version with the worldwide unique Gold Crosspoint contact technology.
- The only solution from a single source: patented (patent pending) noise reduction with integrated 2-component stem.
- Reliable reduction of bottom-out and top out noise
- Noise reduction takes place in the glass-fibre reinforced base, regardless of 3rd party solutions on the keyswitch.
- Precision "Made in Germany" with a short bounce time of < 5 ms
- Self-cleaning contacts, resistant to dust and dirt
- Over 50 million strokes per keyswitch without compromising on quality.
- Long-lasting safe switching performance in the renowned "Original CHERRY quality" tried-and-tested a billion times over.

Technical Data:

Keymodule:

- Switch type: MX
- Protection class: IP40
- Operation characteristics: BLACK SWITCH SILENT Linear (60 cN)



- Fastening: Product dependant, see table "Models"
- Switching voltage: 12 V AC/DC max.
- Switching current: 10 mA AC/DC max.
- Dielectric strength: 500 V / 50Hz
- Durability: > 50 million actuations
- Contact configuration: Single-pole contact
- Actuator travel: 3.7 -0.4 mm
- Pretravel: 1.9 ± 0.6 mm
- Initial force: 30 cN min.
- Actuation force: 60 ± 20 cN
- Bounce time: < 5 ms (during actuation with 0,4 m/s)
- Standard lead spacing: 19.05 mm (16 mm min.)
- Lighting: Product dependant, see table "Models"
- Decoupling diode: Product dependant, see table "Models"
- Wire jumper: Product dependant, see table "Models"
- Insulation materials: Thermoplastics (min.UL 94 HB)
- Spring: Stainless steel
- Contacts: High-quality gold alloy
- Storage Temperature: -40°C to 70°C
- Operating Temperature: -10°C to 70°C
- Humidity: Storage: average <50% max. 3 months / 75% max. 15 days, operation: 5% to 95% without condensation

For detailed information and the layout of the details described above, please do not hesitate to ask for our technical specifications and drawing.

Warranty:

2 years

Errors, technical changes and delivery possibilities excepted. Technical information refers only to the specifications of the products. Features may differ from the information provided.

Models:

	Product name	Order number	Fastening	Lighting	Decoupling diode	Wire jumper
1	CHERRY MX SILENT BLACK	MX3A-11DN	Snap fastening in frame	no	yes	no
2	CHERRY MX SILENT BLACK	MX3A-11DW	Fixing pins in the printed circuit board	no	yes	no
3	CHERRY MX SILENT BLACK	MX3A-11GN	Snap fastening in frame	LED in green	no	no
4	CHERRY MX SILENT BLACK	MX3A-11GW	Fixing pins in the printed circuit board	LED in green	no	no
5	CHERRY MX SILENT BLACK	MX3A-11JN	Snap fastening in frame	no	no	yes
6	CHERRY MX SILENT BLACK	MX3A-11JW	Fixing pins in the printed circuit board	no	no	yes
7	CHERRY MX SILENT BLACK	MX3A-11NN	Snap fastening in frame	no	no	no
8	CHERRY MX SILENT BLACK	MX3A-11NW	Fixing pins in the printed circuit board	no	no	no
9	CHERRY MX SILENT BLACK	MX3A-11RN	Snap fastening in frame	LED in red	no	no
10	CHERRY MX SILENT BLACK	MX3A-11RW	Fixing pins in the printed circuit board	LED in red	no	no
11	CHERRY MX SILENT BLACK	MX3A-11YN	Snap fastening in frame	LED in yellow	no	no
12	CHERRY MX SILENT BLACK	MX3A-11YW	Fixing pins in the printed circuit board	LED in yellow	no	no