

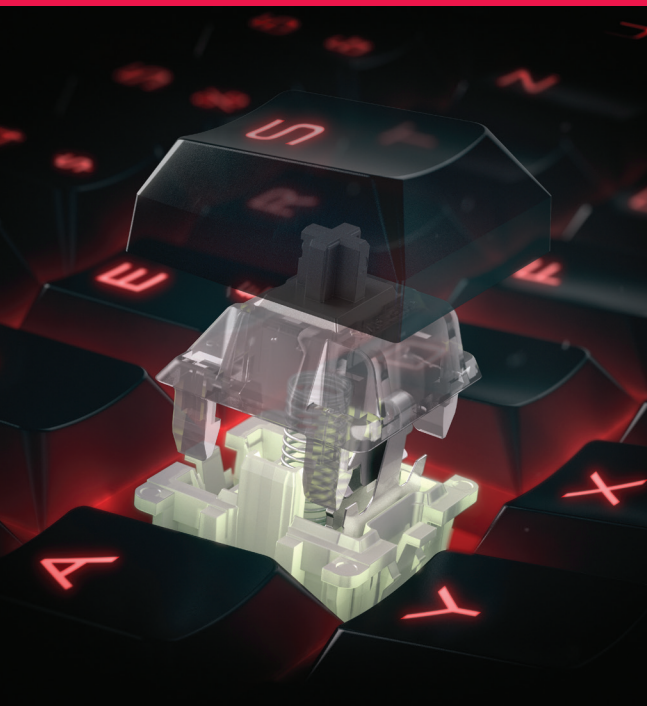


CHERRY Mechanical Keyboard Series and Performance Gear

CRAFTED FOR EVERYDAY PROFESSIONAL USE. LIMITLESS FLEXIBILITY, AND COMFORT TO GLIDE THROUGH YOUR TASK.



Crafted by Professionals for Professionals.



Our products are designed and engineered with the utmost of quality and comfort for a better typing experience in mind. Renowned by professionals and gamers alike for precision, durability and comfort, there's no questioning why CHERRY MX switches serve as the standard for mechanical keyboards.

Whether you want a tactile or linear feel, clicky, or quiet, RGB illumination, precise activation force and travel distance are the core characteristics in all 6 billion CHERRY key switches made to date.

From keyboards and mice, to headphones, and accessories, we craft professional gear. Experience the CHERRY difference.



You Have Preferences. We Have Choices.



MX BOARD 1.0 TKL

P/N: G80-3811LYAEU-2

Space-saving Ten Key Less (TKL) design

- Corded 87% layout promotes ergonomic mouse position
- Adjustable backlighting
- Laser-etched key legends
- Full N-Key rollover; anti-ghosting, WIN lock



MX BOARD 1.0

P/N: G80-3815LWAUS-2

Crafted for professional use

- Corded mechanical keyboard with palm rest included
- Wear-resistant keycaps
- Full N-Key-rollover anti-ghosting, WIN lock



G80-3000N RGB TKL

P/N: G80-3833LWBUS-2

Reclaim your desk space

- Corded 87% layout promotes ergonomic mouse position
- Full N-Key-rollover, WIN lock
- On board dynamic RGB lighting and compatibility with CHERRY UTILITY Software for customization

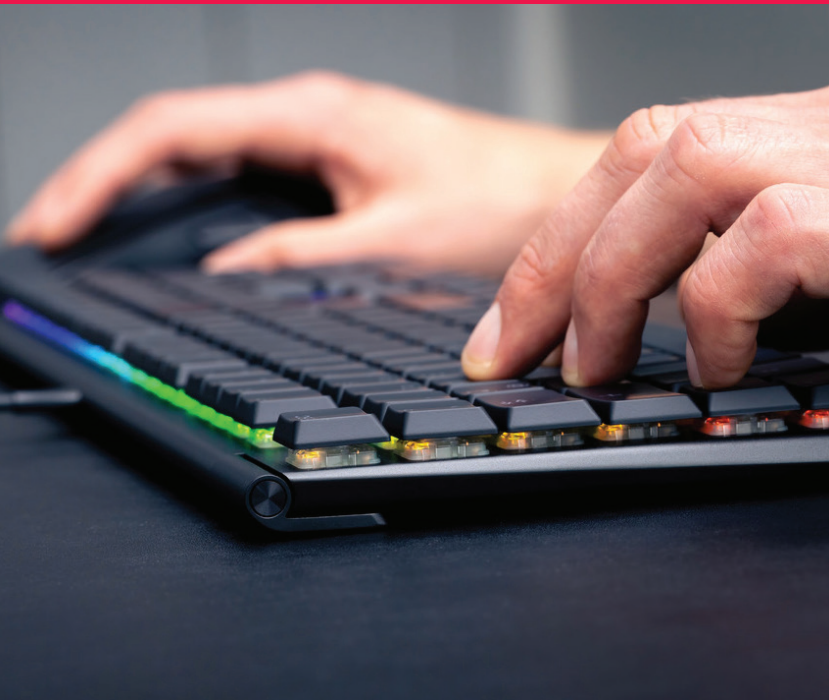


G80-3000N RGB

P/N: G80-3838LWBUS-2

Classic CHERRY, made for today's professional user

- MX SILENT RED Gold-Crosspoint key switches for absolute precision
- Full N-Key-rollover, WIN lock
- On board dynamic RGB lighting and compatibility with CHERRY UTILITY Software for customization



MX 10.0N RGB

Ultra-Thin CHERRY MX LOW PROFILE RGB Keyboard.

When style and function are your focus, the CHERRY MX 10.0N RGB delivers a desktop to create, work, or play. Smooth aluminum surfaces - absent fasteners. Integrated full length aluminum fold out support with slow close. Low profile keycaps matched to CHERRY MX LOW PROFILE RGB SPEED switches. An elegant, comfortable, quick, and ultra-thin typing experience.



Premium. Modern. Ultra-thin.



CHERRY MX
LOW PROFILE
RGB
SPEED



MX 10.0N RGB

P/N: G8A-25010LVBUS-2

Ultra-thin RGB keyboard

- Ultra-thin rigid design under 0.87 inches in height
- On board RGB lighting options with 8 MB of memory
- Use CHERRY UTILITY Software for per key and lighting customization
- Full N-Key-rollover, anti-ghosting, WIN lock



CHERRY MV
RGB LINEAR



MV 3.0 RGB

P/N: G8B-26000LYAEU-2

Your keyboard. Your style.

- Rigid and durable aluminum surface with passive surrounding light ring
- CHERRY VIOLA switches provide comfortable progressive force curve with fast reset and exceptionally smooth travel
- On board dynamic RGB lighting and compatibility with CHERRY UTILITY Software for customization



CHERRY MX
RGB SILENT
RED



MX BOARD 3.0 S

P/N: G80-3874LWAUS-2 [black]

Speed and performance

P/N: G80-3874HWAUS-0 [white]

- Gaming style corded mechanical keyboard in aluminum housing
- Full RGB with onboard memory for 5 dynamic layouts
- Abrasion-resistant keycaps
- Optional palm rest available (shown on models)

Gain the edge with CHERRY programmable mouse, headset, and mousepads.



MC 3.1

P/N: JM-3000-2

RGB gaming mouse

- High resolution optical sensor with up to 5,000 DPI
- 6 programmable buttons and illumination modes
- Tank-track design mouse wheel; low lift off distance

Performance Gear

The perfect accessory for your CHERRY keyboard and mouse; make every day work easier or optimize your gaming experience.

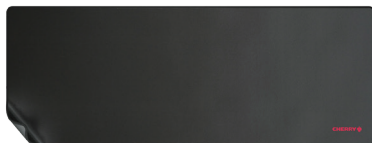


HC 2.2

P/N: JA-2200-2

Over ear USB wired headset for gaming, video conferences, and multimedia

- Integrated USB sound card and in tuned virtual 7.1 surround sound
- 50mm drivers for a wide sound spectrum and crystal-clear sound reproduction - ideal for simultaneous gaming and speaking
- Easy access tactile volume and mute controls directly on the headset
- High quality detachable 3.5mm microphone



MP 1000 PREMIUM MOUSEPAD XL

P/N: JA-0500

MP 2000 PREMIUM MOUSEPAD XXL

P/N: JA-0510

- Durable but smooth fabric for the right amount of resistance
- Flexible so it can easily be rolled up for travel
- Sewn edges with non-slip underside
- Premium XL mousepad measurements: 11.81 x 13.78 x 0.20 in.
- Premium XXL mousepad measurements: 31.50 x 13.78 x 0.20 in.

For our full product portfolio, visit cherryamericas.com

800-510-1689 • sales@cherryamericas.com